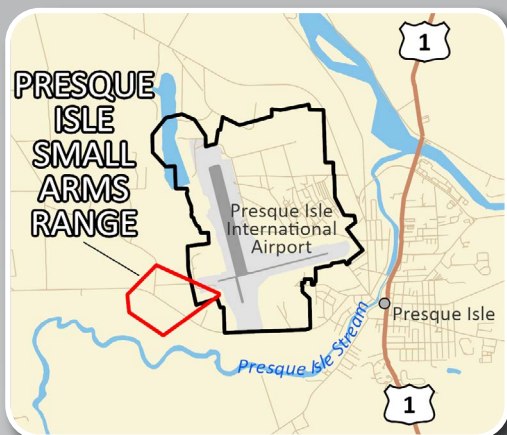


# Information Guide

## Former Presque Isle Air Force Base

Maine  
Aroostook County



### Presque Isle Small Arms Range



US Army Corps  
of Engineers.

## **Introduction**

The purpose of this guide is to provide information about the military training activities that took place at the former Presque Isle Air Force Base and to raise awareness of the hazards that may exist at the property.

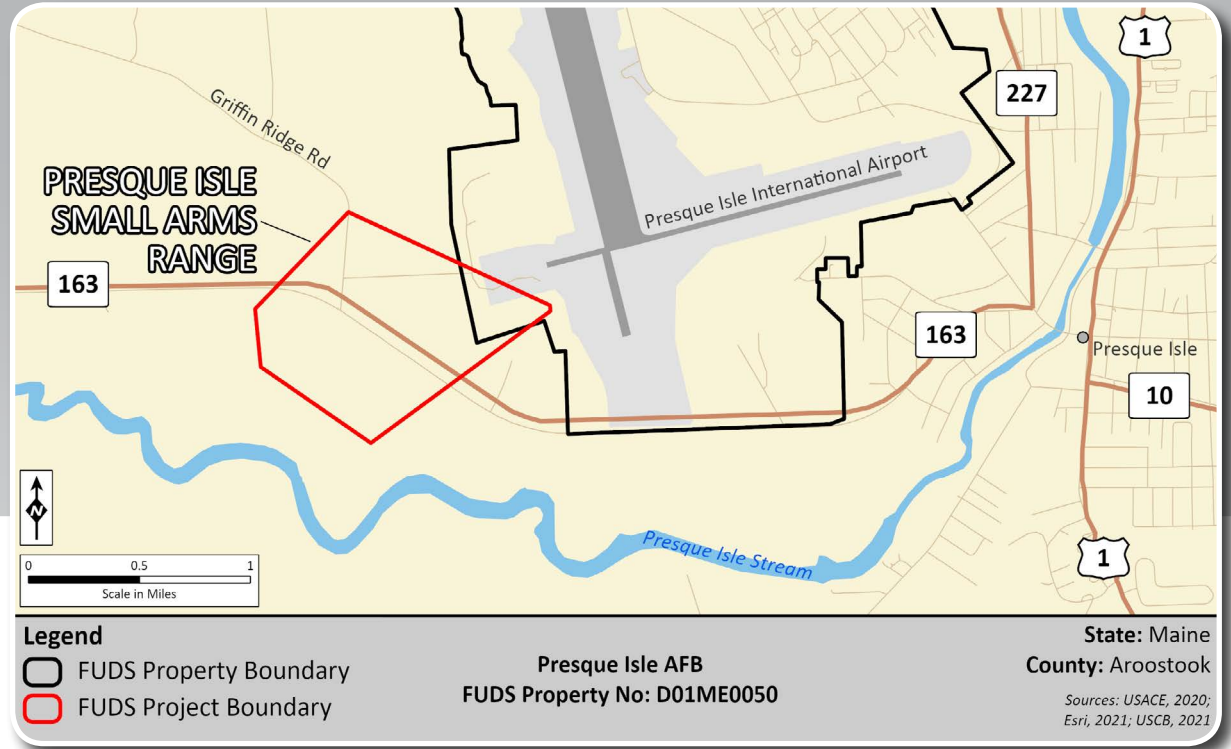
The former Presque Isle Air Force Base was used intermittently from 1941 to 1961. The original mission of the base was to serve as an embarkation port for trans-Atlantic flights to the United Kingdom, Casablanca and Paris. The base was later used by the 23rd Fighter Interceptor Wing to train combat crews and to protect the northeastern United States. An area associated with the former Presque Isle Air Force Base, known as Presque Isle Small Arms Range, has been identified through historical research and site visits as having been used for small arms training. The munitions known or suspected to have been used at the range are small arms ammunition. Hazards associated with small arms ammunition may still remain on the property.

The Presque Isle Small Arms Range is located in the city of Presque Isle, in Aroostook County, Maine. The land is publicly and privately owned, and is primarily undeveloped with some residential and recreational use. A small portion of the land is managed as the Presque Isle International Airport.



Source: <https://www.mainmemory.net/artifact/23020>

Dorm buildings that housed personnel from the former Presque Isle Air Force Base, 1944



## Frequently Asked Questions

**Q:** Do small arms ranges present a health risk?

**A:** Lead fragments, both large and small, can be present in berms at small arms ranges. Lead may be harmful if there is repeated ingestion or repeated contact with skin. Because lead in the fragments presents a potential health hazard, the fragments should not be touched, moved, piled or disturbed in any way. The best thing to do is leave them alone.

**Q:** What should I do if I come into contact with lead fragments?

**A:** If you have walked through lead fragments, rinse off and remove your shoes before entering your home. If your hands and clothes have come into contact with fragments, wash your hands and clothes.

**Q:** What are the findings of the work that the government has completed?

**A:** Historical research and site inspections indicate that sometime between 1947 and 1961,

the U.S. military used small arms ammunition at this range, and potential hazards may remain on the property. The U.S. Army Corps of Engineers has determined that further investigation is required for the Presque Isle Small Arms Range.

**Q:** Where can I get more information?

**A:** For more information, call the Formerly Used Defense Sites Information Center toll-free number 1-855-765-FUDS (3837) or select the GIS Tool on the Interim Risk Management page at [www.fuds.mil](http://www.fuds.mil).



Small arms debris found at the former Presque Isle Air Force Base



**Small arms debris found at the former Presque Isle Air Force Base**

## **Former Presque Isle Air Force Base**

### **For More Information**



**US Army Corps  
of Engineers**

The U.S. Army Corps of Engineers is responsible for identifying, investigating and, when necessary, conducting an appropriate response action to address contamination and military munitions resulting from past Department of Defense activities at Formerly Used Defense Sites, also referred to as FUDS.

For information about the former Presque Isle Air Force Base, contact the FUDS Information Center by calling the toll-free number 1-855-765-FUDS (3837).

For general information about the FUDS Program, visit [www.fuds.mil](http://www.fuds.mil).