

Information Guide

Former Hereford Army Airfield

Arizona
Cochise County



Skeet Range



U.S. ARMY



**US Army Corps
of Engineers®**

Introduction

The purpose of this guide is to provide information about the military training activities that took place at the former Hereford Army Airfield and to raise awareness of the hazards that may exist at the property.

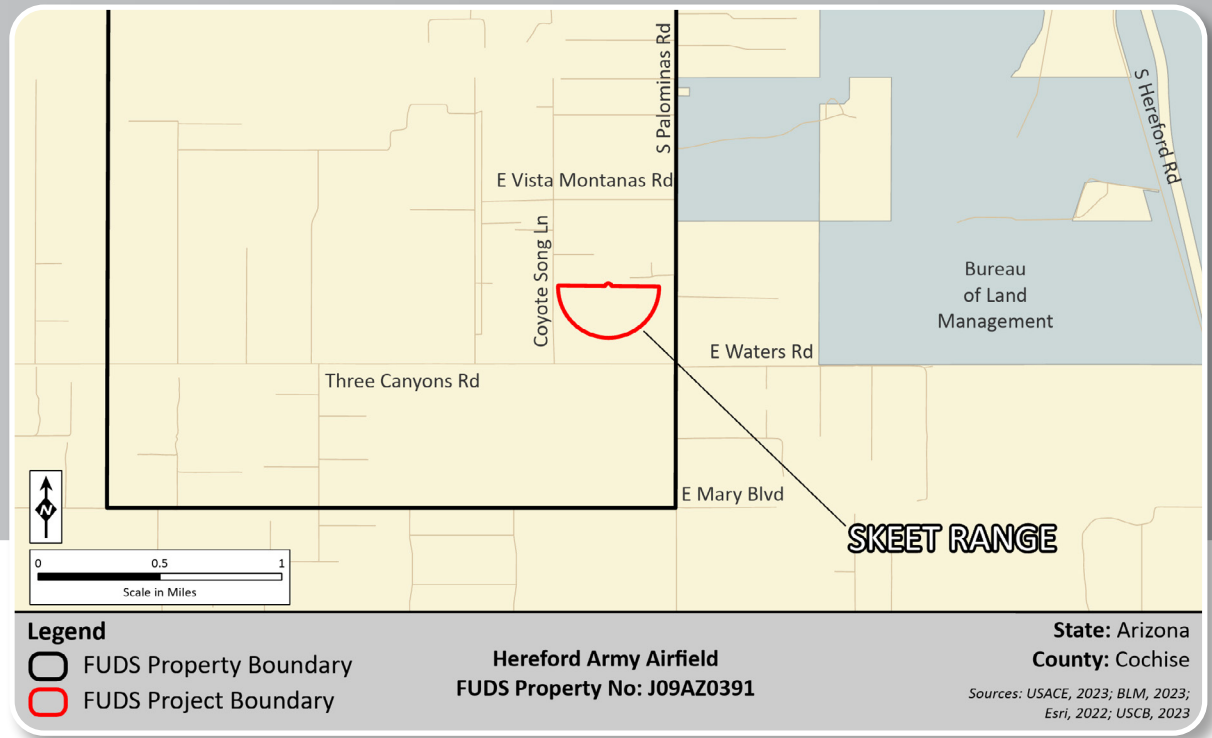
The former Hereford Army Airfield was used from 1942 to 1945 by the U.S. Army as an auxiliary airfield for the former Douglas Army Airfield and to conduct specialized night bomber training. An area of the former Hereford Army Airfield, known as Skeet Range, has been identified through historical research and site visits as having been used as a skeet range. Skeet ranges ordinarily consisted of a shooting field (laid out in a semicircle) with an associated safety fan in which skeet targets were hurled into the air for target practice by Soldiers along the firing line. The items known or suspected to have been used at the range are small arms ammunition and skeet targets. Hazards associated with skeet targets may still remain on the property.

The Skeet Range is located in the southeastern portion of the former Hereford Army Airfield, just northeast of the intersection of Three Canyons Road and Coyote Song Lane, in Cochise County, Arizona. The land is privately owned and is primarily used for residential purposes.



Source: <http://www.airfielddatabase.com>

Aerial view of the former Hereford Army Airfield



Frequently Asked Questions

Q: What are skeet targets?

A: Skeet targets are the clay pigeons hurled into the air from a trap at varying elevations and speeds to simulate the angles of flight taken by moving targets.

Q: Do skeet target fragments present a health risk?

A: World War II-era skeet targets used at this range were manufactured with coal tar pitch as a binder. Coal tar pitch contains polycyclic aromatic hydrocarbons, also known as PAHs. Because PAHs in the skeet target fragments present a potential health hazard, the fragments should not be touched, moved, piled or disturbed in any way. The best thing to do is leave them alone.

Q: Where are the skeet target fragments located?

A: The Skeet Range is located in the southeastern portion of the property. However, because skeet target fragments can become airborne in heavy winds and be washed away by moving water from storms, skeet may be found outside the known skeet range area.

Q: What should I do if I come into contact with skeet target fragments?

A: If you have walked through skeet target fragments, rinse off and remove your shoes before entering your home. If your hands and clothes have come into contact with skeet target fragments, wash your hands and clothes.

Q: What are the findings of the work that the government has completed?

A: Historical research and site inspections indicate that from 1942 to 1945, the U.S. military used skeet targets at this range, and potential hazards may remain on the property. The U.S. Army Corps of Engineers has determined that further investigation is required for the Skeet Range.

Q: Where can I get more information?

A: For more information, call the Formerly Used Defense Sites Information Center toll-free number 1-855-765-FUDS (3837) or select the GIS Tool on the Interim Risk Management page at www.fuds.mil.



Skeet target fragment at the former Hereford Army Airfield



Skeet target fragments at the former Hereford Army Airfield

Former Hereford Army Airfield

For More Information



**US Army Corps
of Engineers**

The U.S. Army Corps of Engineers is responsible for identifying, investigating and, when necessary, conducting an appropriate response to address contamination and military munitions resulting from past Department of Defense activities at Formerly Used Defense Sites, also referred to as FUDS.

For information about the former Hereford Army Airfield, contact the FUDS Information Center by calling the toll-free number 1-855-765-FUDS (3837).

For general information about the FUDS Program, visit www.fuds.mil.